

# OptiPure cfDNA (91C) Quick Guide



TANBEAD



**Starting Materials**

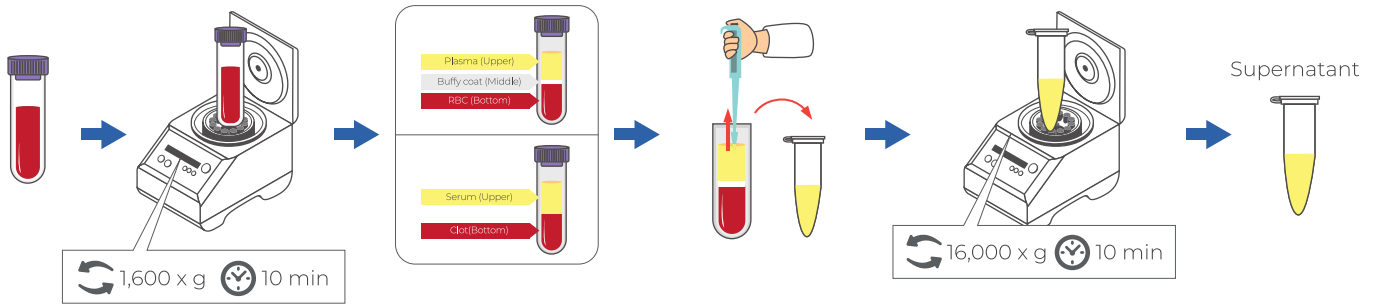
Sample: 1~6mL Serum/Plasma

**Elution Volume**

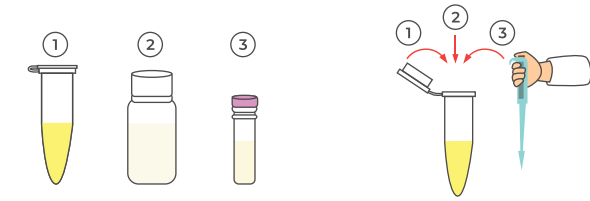
70 ~ 100  $\mu$ L

## For Serum/Plasma

### STEP 1 Sample Collection and Centrifugation

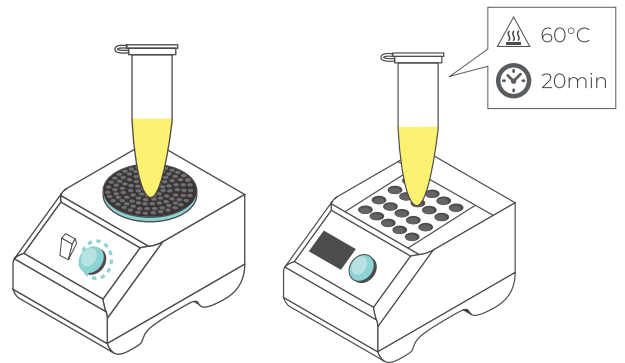


### STEP 2 Add Reagent and Enzyme

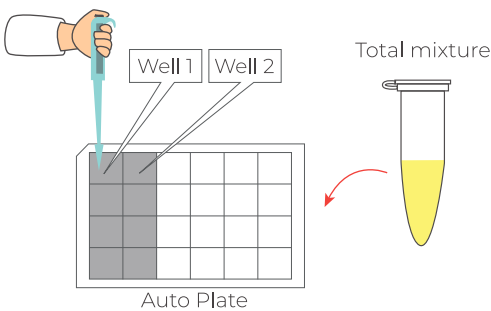


①	②	③	①	②	③
Sample volume (mL)	20%SDS ( $\mu$ L)	Proteinase K ( $\mu$ L)	Sample volume (mL)	20%SDS ( $\mu$ L)	Proteinase K ( $\mu$ L)
1	60	40	4	240	160
2	120	80	5	300	200
3	180	120	6	360	240

### STEP 3 Vortex and Incubation

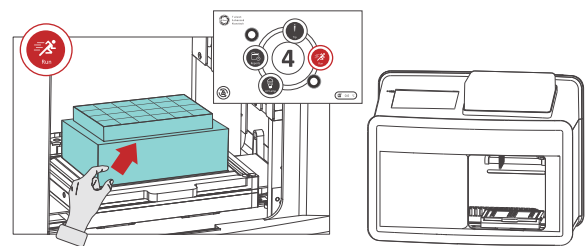


### STEP 4 Transfer Mixture



Sample volume (mL)	Well 1				Well 2			
	Pre-filled LB1 ( $\mu$ L)	Add Lysis buffer ( $\mu$ L)	Add sample (mL)	Add MB ( $\mu$ L)	Pre-filled LB2 ( $\mu$ L)	Add Lysis buffer ( $\mu$ L)	Add sample (mL)	Add MB ( $\mu$ L)
1	1600	-	1	60	3200	-	-	-
2		1600	2	60		-	-	-
3		3200	3	120		-	-	-
4		1600	2	60		-	2	60
5		2400	2.5	120		800	2.5	120
6		3200	3	120		1600	3	120

### STEP 5 Automatic Extraction

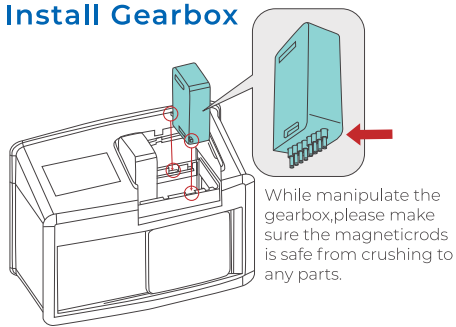


⚠ For automated instrument operation, please refer to the operation guidelines for each series of instruments.

⚠ Please refer to the instructions for use of the reagent for the program used.

※ Here is the illustration for CH 8 Gearbox with Auto Plate.

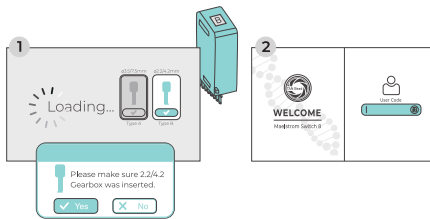
## STEP 1 Install Gearbox



While manipulate the gearbox, please make sure the magnetic rods is safe from crushing to any parts.

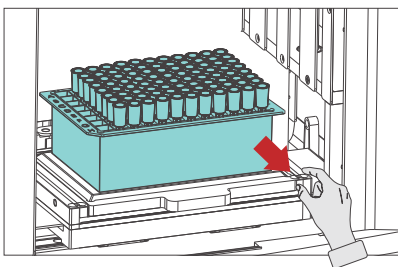
Power off. Open the top lid. Install one gearbox according to the sample type. Close the top lid.

## STEP 4 Choose Rod Type and Login System



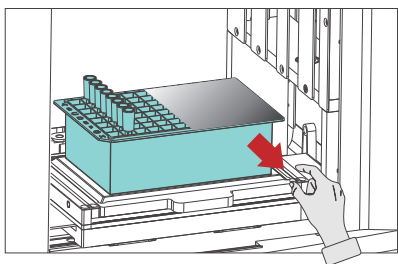
Select  $\phi 2.2/4.2$ mm (TANBEAD reagent). Confirm "YES", then log in with user code "333" for operation.

## STEP 7 Tip Box Removal



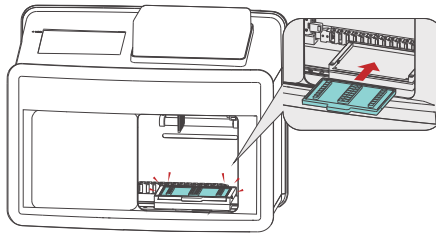
Remove the tip box after mount tips.

## STEP 10 Extraction Complete



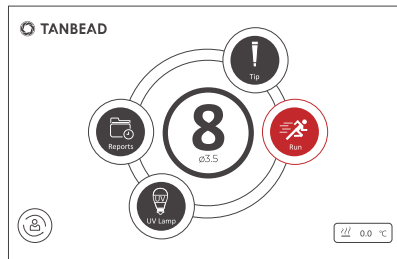
Remove extraction kit.

## STEP 2 Install Heating Plate



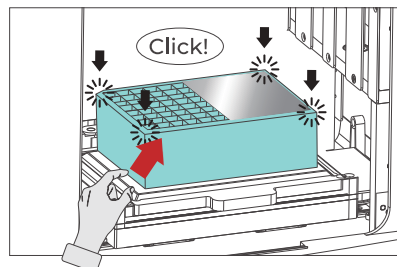
Open the door. Install the corresponding heating plate.

## STEP 5 Prepare to Run



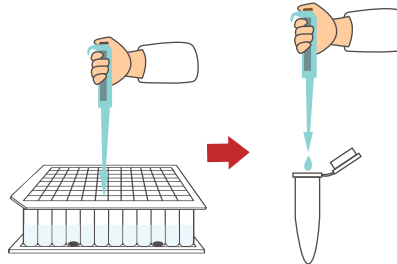
Tap first, double-tap the Program name from the OptiPure Blood DNA IFU, then follow the on-screen instructions.

## STEP 8 Start to Run



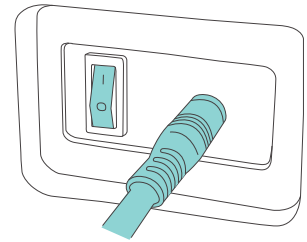
Install the reagent Plate (cut corner at bottom-left), press the four corners until it clicks, then press "YES" on the confirmation window to start the run.

## STEP 11 Transfer Nucleic Acids



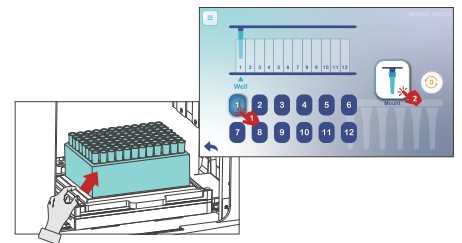
Transfer the purified nucleic acid from column #6 / #12 to clean tube.

## STEP 3 Power On



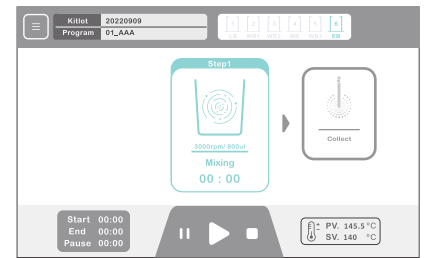
Power On the instrument.

## STEP 6 Place the Spin Tips Assembled Box and Mounting Tips



Place the spin tips assembled box onto the heating plate and insert the SW8, then tap the "mount" icon and confirm "YES" to start mounting.

## STEP 9 Running Status



Check the display status. Tap on "||" to pause or "■" to stop and abort the run. When finished, "✓" icon will appear. Tap to enter the report and review the results. After reviewing the report, return to the previous page to perform tip ejection.



# Maelstrom Switch 8

For more detailed information, please refer to the User manual within the following link.



Video  
How to Use



Video  
FAQ



User Manual

Taiwan Advanced Nanotech Inc. [www.tanbead.com](http://www.tanbead.com)